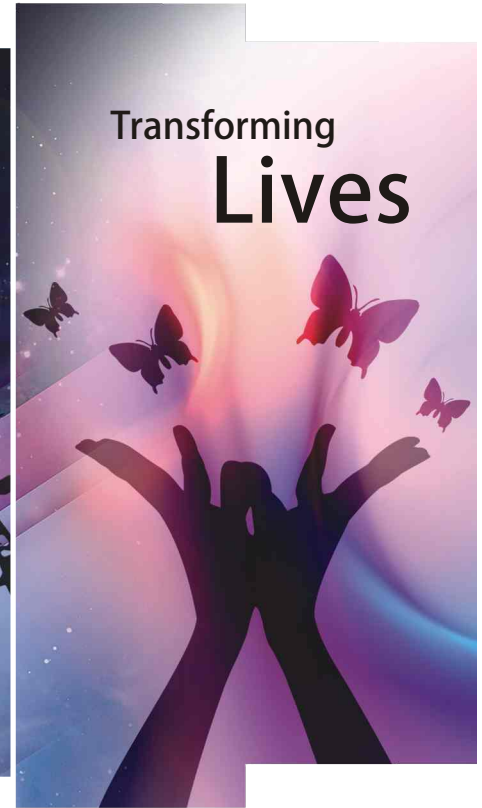
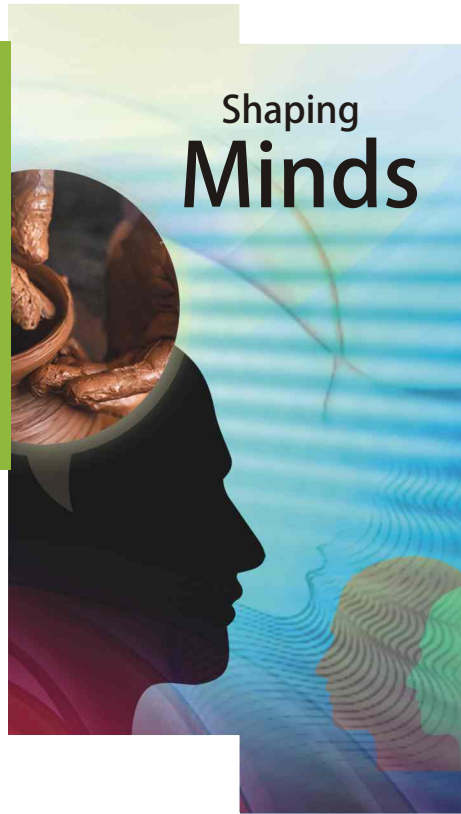




**infini Institute of Program Management  
Pune**  
Recognised centre of EAL, UK

building  
competency  
skills



“Discerning  
workforce dilemmas..  
making  
efficient constructions”



Reforming processes, transforming lives.



**Vikas Patil**  
Managing Director



## the ideology

There is a dearth of skilled work force, well equipped with appropriate job skills. The employability of today's Civil Graduate / Engineer is highly questionable. Today's industry is looking for the special work force to fit into the organizational positions. The kind of competencies required are entirely unique and seldom available in engineers. We at infini work on this 'employability skills' gap.

Our foundation is based on the theme - 'redefining education to employment'. Unlike traditional approach that miss-out applied knowledge, we adopted a unique pedagogy designed from employer's perspective. The structured approach aims to make them job ready. Our pedagogy that includes case based and on-field training clubbed with yoga, value education and corporate life skills helps students to mold themselves and faster climb the career ladder.

In short "We build character"..

# Ideas

for sustained success

80/20

“Transforming people..  
shaping minds”



Optimizing performance, delivering results.



Duration (Day)	Week 1							Week 2							Week 3						
	M	T	W	T	F	S	S	M	T	W	T	F	S	S	M	T	W	T	F	S	S
5 Days																					
4 Days																					
7 Days																					
2 Days																					
5 Days																					
6 Days																					
3 Days																					
7 Days																					

# Training

for skill building

## infini vision

Redefining education for employment in the field of project controls & program management; that is intellectually and personally transformative. To be a lighthouse of advanced knowledge & world class training center offering unparalleled educational system to build crews of experts capable of meeting project commitments & acquire personal success.

“Education is the process by which character is formed, strength of mind is increased, and intellect is sharpened, as a result of which one can stand on one’s own feet.”

## infini mission

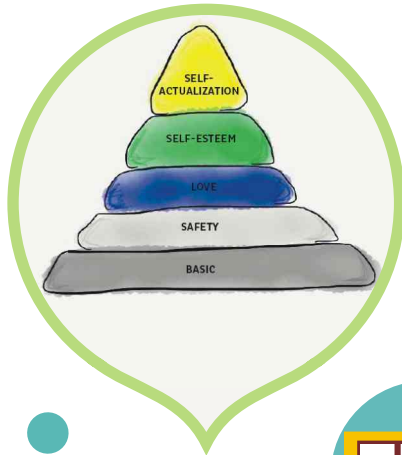
Provide expert training services in Project Controls & Program Management for ensuring on-time success by governing project schedules and cost. Design & deliver competency skills enhancement training programs for graduates, working professionals and teachers from the civil engineering fraternity. To be a nodal agency of psychometric testing & employability skills assessment and coaching.



“Bridging skill gaps...  
improving performance”

Attitude, not aptitude, determines altitude.





**Sameer Alone**  
CEO & Director

## know infini

“Shaping mind, building skills and transforming lives..” is a thought as well as a process developed by infini Institute that would go a long way in resolving workforce dilemmas, primarily of, the construction industry. On the other hand, it intends to direct civil engineers to make successful careers by meeting gaps between job and knowledge.

Its journey of transforming lives has a beginning at schools and colleges wherein it is utmost important to help child / youth select a right career option, which is best suitable to his aptitude, personality and interest.

Infini Institute of Program Management Pvt. Ltd. is a companionship of industry experts, psychologist, mentors and academicians having head office in Pune.

Infini is a recognized center of EAL, UK (C001338).

“ infini is a platform created by, for & to Civil Engineers ”



“There is no job crisis,  
there is skill crisis”

Industry today has a lot of people who are technically qualified. But the question remains 'are they employable?' Are they ready to accept and perform higher and challenging responsibilities? They would require some kind of training, some orientation and maybe some increase in personal competency in a particular domain or field.



## infini classes

### infini BUSINESS CLASS

Serving corporate to improve business performance



infini, through iBC offers a platform to whet and mould business leaders as well as to employees to complete an important learning curve through process improvement and program management.

- Project management solutions
- Productivity enhancement
- Corporate training and competency development

### infini MASTER CLASS

Serving professionals to meet business requirements



iMC is a stepping stone for semi-skilled engineers and managers to get hands on experience with invaluable tools and expertise needed for a successful career. It aims inculcate advanced skills needed to effectively execute business strategies.

- Project Planning & Project Management
- Project Estimation & Planning
- Behavioural Skills assessment

### infini WORKMAN CLASS

Empowering semi-skilled workforce



Training the construction workforce to meet the challenges and demands for construction skills in terms of safety, quality and time. It further sets goal to disseminate knowledge and appropriate skill practices through recognized systems of training, testing and certification to validate competency levels through short term vocational trainings in:

- Formwork carpentry & Scaffolding
- Masonry & Plastering, Tiling
- Steel work / reinforcement work

## infini services

### infini CAREER CLASS

Helping engineers build a career vision



#### 1 yr Full time PG in Construction Project management

It has a potential of transforming a qualified Civil Engineer into a skilled professional and a prospective Construction Manager. This transformation is ensured through self awareness, building vision, bridging skills gaps – technical, practical, software and soft skills with a blend of value education.

#### Short Term Certification Programs

- It is a basket of specialised certification programs for civil graduates & working professionals. These are specially designed considering the background of target audience.
- Project Estimation and Planning using MS Project / Primavera
- Quantity Surveying Estimation & Billing
- Estimation using Newton's Auto Scan
- Project Planning & Controlling using MS Project / Primavera
- Project Management using MS Project / Primavera P6 / Primavera P6 Web
- Project Management Professional (PMP)<sup>®</sup>
- Certified Associate in Project Management (CAPM)<sup>®</sup>
- Building Information Modeling (BIM)
- Construction Quality Control
- Revit Architecture
- MEP Engineering



*“*Our Values  
define us and  
everything we do*”*



Our values serve as a compass for our actions.



“ infini pledges **commitment** to unmatched service and allegiance with an assurance of value for money as well. ”

## infini values

### Adore

Loving what we do makes this process a delight.

### Passion

Commitment in heart and soul reflects in our work.

### Integrity

Integrity through honesty, loyalty, fairness and accountability are our guiding lights.

### Quality

We offer the best or nothing.

### Trust

infini believes in creating an environment of trust with its stakeholders, employees and society at large.

### Professionalism

We don't just expect, but demand professionalism in all aspects of work including honesty, sincerity & discipline.

### Holistic approach

We emphasize on importance of a 'whole' and interdependency.

### Equality

infini employees are treated as a family.

“If you want to  
build the business,  
build the people”

We need to be the change, we wish to see in the world.



## infini advisors & directors



**Yusuf Nalwala**  
Managing Director  
Al Ansari Group of Companies  
Oman



**Jaikumar Salvi**  
Vice President  
Business Dev. & Tendering  
Galfar SAOG, Oman



**Nausher Kariyadan**  
Executive Vice President  
Civil & Marine Infrastructure  
Galfar SAOG, Oman



**Sadashiv Mangale**  
Director



**Jitendra Mandale**  
Director



infini team is our greatest asset and biggest differentiators. We are passionate about the results. We believe in demonstrating a "one team" attitude & are led by our full team of instructors and counselors. Our team leads the firm with our mission of delivering unprecedented results to our clients and people.

infini team of professionals brings immense of experiences to corporate as we render our services. We offer our knowledge and experiences exclusively for the benefit of our clients.

## Corporate Trainers

### Dr. Ajit Patwardhan

PhD, MTech (Mechanical)  
Subject expert: Tendering & Contracting  
Advisor & international corporate trainer having 25 years of experience in Design-Engineering & Construction, 17 years in Project Management. Worked with: NICMAR, AIB-Vincotte Int. (Abu Dhabi), Al Hassan gr. & ELCO I&TC (Muscat), etc. Expertise into Contracts Management, Claims, Arbitration.

### Ms. Hyacinth Arya

Bachelor of Arts  
Subject expert: Corporate life skills  
Facilitator and international corporate trainer. Proprietor – Corporate Finesse(Pune), having 34 years into trainings - Corporate Communication, Personality Dev., Soft Skills, Life skills, SRM & CRM. Major clientele – SPCL, L&T, Afcons, Mafoi, TATA etc. & Institutes like NICMAR, Symbiosis, VIBM, MIT.

### Rajendra Deshmukh

B.E. (Mech)  
Subject expert: Project Management  
Mentor for businessmen, retired GM – Godrej & Boyce. Having more than 30 years of field experience and 12 years of training as expert faculty of the subjects mainly Project Management, Business Systems and Values, Operations and Manufacturing Management, Facility Management. Worked for many reputed organizations like Symbiosis, MIT, VIT, PVG etc.

### Vikas Patil

BE Civil, PGDCM, PMP®  
Sr. Manager Planning & Skill Pool Head - Galfar (Oman)  
Subject expert: Project Planning, Controlling & PMO  
20 years of experience in project execution, planning, construction & project management. Worked with Shapooji

### Hemant Joshi

B.E. (Civil), MIE, LMICI.  
Subject Expert: Construction Quality Control  
Freelance consultant having 37 years of experience in Industrial and Residential projects. Worked as AGM-Regional Quality Head in Shapoorji & Pallonji Co. Ltd. and JMC for long 11 years before retiring from professional career.

### Sameer Alone

BE Civil, ME (C&M), PhD (Pursuing)  
Subject expert: Project Planning & Controls  
18 years of experience – on filed, teaching & training. Worked with Suzlon, Unison PMC, MIT, MITCOM. Expertise into designing of post graduate programs in construction management.

### Vipul Patil

BE Civil  
Subject expert : Estimation, Project Planning & Controls, Quality & Safety  
19 years of experience in designing, planning, project execution & management. Worked with Satish Marathe (India), Force 10 UAE (UAE), Bhavan & Galfar SAOG (Oman).

### B. T. Ade

BE Civil, ME(C&M), PMP®, Microsoft Certified Professional, Oracle Primavera Specialist  
Subject expert: Project Planning & Controls, Primavera, MS Project 17 years of experience – on filed, teaching & training. Worked with VIT institute, Marvel realtors. Major clientele SPCL, PWD (Pune), Raymonds, Galfar, Oman, Softech, Karan Builders, MIT, MITCOM etc.

### Girish Dharap

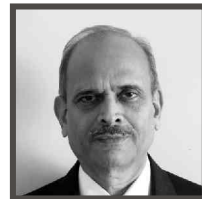
B.E (Civil), MMS, PGDBM  
Subject expert : Corporate life skills  
Life skills trainer and coach, having 15 years of experience as a Facilitator & Corporate trainer. Proprietor of Nalanda Business Asso. Ex. Manager WNS Global Services. Worked with Hitachi Consulting, Dale Carnegie training. Major clientele - Galfar, NICMAR, Symbiosis, Sakal media group, L&T infotech etc. He is an expert in behavioural training & team building. He is a Certified NLP Practitioner, Hypnotist, Advanced Life Coach and Facilitator from Dale Carnegie Training.

### Dr. Vishal Sangale

BHMS, MA (Clinical Psychology), MS (Counselling & Psychotherapy)  
Subject expert: Value education & Coaching  
12 years of experience of Practicing Psychologist & Counsellor. Co-Founder Priyottam Brainberg Clinics & Consulting (Pune). Clientele – Galfar, Al Ansari, SSRVM, Matrumandir, Madhurima, Garware (Aurangabad), Samvedana (Nanded), Atmamalik Int. School (Kopergaon). Expertise into learning & Memory, Vedic Psychology, Temperaments & Mood Disorders.

### Sukrut Patwardhan

B.E (E&TC), PGDBA (HR), Certified Learning & Dev. Manager  
Subject expert: Corporate Life Skills, English Lab  
Sukrut is a versatile trainer with aprox. 11 years of experience. He completed international certification in Soft Skills from Pebbles Hills University (USA) and NLP Practitioner certificate from AUNLP. He worked with WNS Global Services and Bajaj Allianz. Currently he is a freelancer, working as a corporate trainer, ICF Certified Leadership coach and a Content Developer.



**Rajendra Deshmukh**  
Professor Emeritus



**B. T. Ade**  
Head STCP & Academics



**Vipul Patil**  
Head - Admin & Placement



**Dr. Vishal Sangale**  
Assessment Partner  
iBAT, Traitfit & Whizqiz



**Girish Dharap**  
Head - Creative Learning

“ We are successful  
because we contribute  
to the society ”



Goodness is the only investment which never fails.





"Why fit in, when you were born to  
STANDOUT?"  
..Dr Seuss

## Traitfit Assessment

It's like a magical realism if a person gets a report of his ability, attitude, interests or personality; or specific difficulties, disorders & deficits. Psychometric testing can help with everything from resolving poor concentration or memory problems to assessment of special needs related to a disability, to career planning.

We offer psychometric testing for people of all ages. We are skilled at using a collection of standardised and validated tests that are specifically selected to address our clients' concerns.

Service Areas:

- Employability skills assessment
- Psychometric testing
- Career counseling
- Training

Assessment partner



# “we grow by lifting others”

## Employability Skills Assessment & Psychometric testing: Traitfit & Wizquiz

Right career selection at right time is crucial for successful career. The online career assessment makes it easy to opt the right career. The comprehensive career assessment has been developed by the experts. By taking this test and career guidance, the students can easily find out their interest areas, aptitude and personality and opt for a career best suitable to their personality and interest areas. Testing & counseling benefits in –

- taking career decisions.
- determining academic placement for the best learning environment.
- enhancing interpersonal relationships, personal insight and growth.
- enhancing academic performance & self-confidence.
- guiding career to explore new options.

## iBAT- infini Brainberg Ability Test:

It is a Traitfit test to measure personality attributes, ability, skills, and motivators. Not only this, it will also help measure attitude and ego!

As a HR function, this tool can be used a trusted application to have, get, develop and retain loyal workforce. On the other side, it helps people select better career choice as per core interest and personality attributes. It help –

- to select right candidate for right post
- set appropriate appraisal systems
- predict attrition and further reduction
- enhance productivity & performance
- self development & leadership



Commitment is what transforms a promise into reality.

## infini clientele

**Galfar E&C SAOG, Oman** for behavioral testing & specialised training in (i) Planning & control; (ii) Quantity Surveying for 60 Omani nationals; and Primavera training for managers.

**Aspire Galfar** for Estimation, Oman.

**Rohan Builders, Pune** for change management and productivity enhancement.

**Clover builders** for Behavioural assessment and technical skills competence enhancement in Planning & Project Control.

## Institutes' association

Motto: Employability enhancement and skills building training programs for students and faculty development programs for teachers.

- Karmveer Bhaurao Patil CoE (Satara)
- J L Chaturvedi CoE (Nagpur)
- MET Bhujbal Knowledge City CoE (Nashik)
- J J Magdum CoE (Jaisingpur)
- Annabhau Sathe CoE (Karad)
- KJ's Trinity Collage of Engineering (Pune)

## Prospective Companies for Internship & Placement



AL Ansari Trading  
Enterprise LLC, Oman



Aspire Galfar,  
Oman



Galfar Engineering &  
Contracting SAOG, Oman



Middle East



Shapoorji Pallonji



SCON



SMS



J. Kumer



FIDESTO  
All About Project Management



EMPIRE  
GROUP



NYATI  
GROUP  
Building Relationships



ROHAN



Samarth Group



ARWADE  
INFRASTRUCTURE LIMITED



Krishna  
Associates

Recruitment Partner



TRICON  
INFRA BUILDTECH PVT. LTD.



**infini Institute of Program Management**  
Sahakarnagar, Pune

info@infinisolutions.in  
www.infinisolutions.in  
020 242 242 44

EAL, UK Recognized center



Code No. 00022